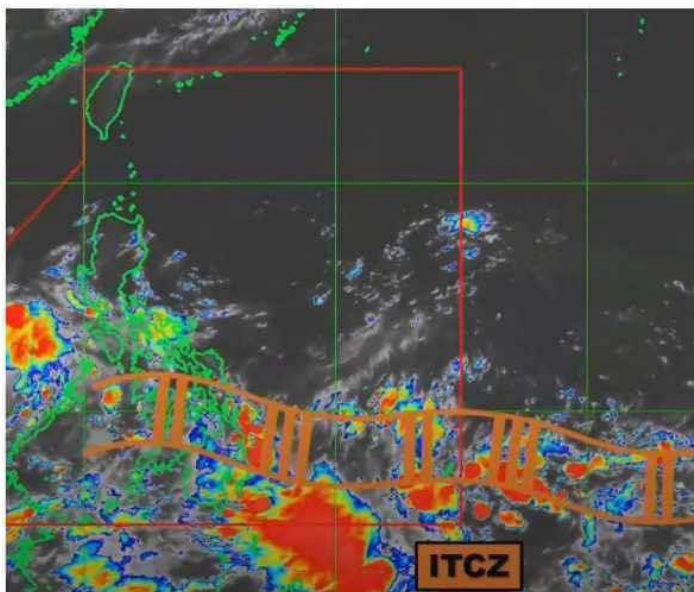




### PREVAILING WEATHER SYSTEMS



- **Intertropical Convergence Zone (ITCZ) affecting Southern Luzon, Visayas, and Mindanao.**

### FORECAST WEATHER CONDITIONS

Region/Province	Weather System	Effects
Palawan, Occidental Mindoro, Western Visayas, Zamboanga Peninsula, BARMM, SOCCSKSARGEN, Misamis Occidental, Lanao del Norte, and Davao Occidental	Intertropical Convergence Zone	Cloudy skies with scattered rainshowers and thunderstorms
Bicol Region, and the rest of MIMAROPA, Visayas, and Mindanao	Intertropical Convergence Zone	Partly cloudy to cloudy skies with isolated rainshowers or thunderstorms
Metro Manila and the rest of Luzon	Localized Thunderstorms	Partly cloudy to cloudy skies with isolated rainshowers or thunderstorms

### FLOOD WATCH

#### Major River Basin

**Davao**

#### Major Dams/Reservoir

**None**

Sources: DOST-PAGASA Weather Update issued at 4AM, 11 July 2024; DOST-PAGASA 24-hour Public Weather Forecast issued at 4AM, 11 July 2024

PAGASA Weather Forecast for 11 July 2024 (Thursday, AM Forecast)

Intertropical Convergence Zone (ITCZ) affecting Southern Luzon, Visayas, and Mindanao.

Possible flash floods or landslides due to moderate to at times heavy rains.