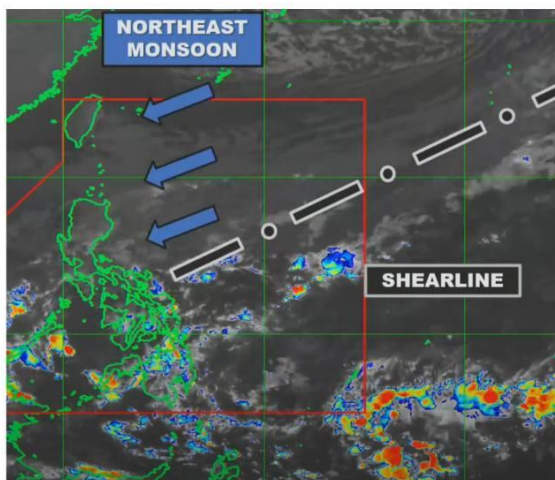




## Weather Monitoring

January 13, 2025 (Monday), 8:00AM

### Prevailing Weather Systems



- **Shear Line** affecting Southern Luzon and the eastern section of Visayas.
- **Northeast Monsoon** affecting the rest of Luzon.

### Forecast Weather Condition

Region / Province	Weather Condition	Caused By
Eastern Visayas, Bicol Region, MIMAROPA, and Quezon	Cloudy skies with scattered rains and isolated thunderstorms	Shear Line
Caraga and Davao Region	Cloudy skies with scattered rains and thunderstorms	Easterlies
Metro Manila, Cagayan Valley, Cordillera Administrative Region, Aurora, Bulacan, Cavite, Laguna, Batangas, and Rizal	Cloudy skies with rains	Northeast Monsoon
The rest of Luzon	Partly cloudy to cloudy skies with isolated light rains	Northeast Monsoon
The rest of the country	Partly cloudy to cloudy skies with isolated rainshowers or thunderstorms	Easterlies

### Flood Watch

#### Major River Basin

- Bicol

#### Dams/Reservoir (Sub Basin)

- None

**Source:** DOST-PAGASA Weather Update issued at 4AM, 13 January 2025; DOST-PAGASA 24-hour Public Weather Forecast issued at 4AM, 13 January 2025; DOST-PAGASA Flood Information

From [Department of Agriculture - DRRM Operations Center](#):

### DOST-PAGASA Weather Forecast for 13 January 2025 (Monday, AM Forecast)

- Shear Line affecting Southern Luzon and the eastern section of Visayas.
- Northeast Monsoon affecting the rest of Luzon.

Possible flash floods or landslides due to moderate to heavy with at times intense rains.

Follow and visit the official website and social media pages of [Dost pagasa](#) for more information.

[#DA](#)